

Isolation Gowns

DISPOSABLE ISOLATION GOWN

Non-sterile and sterile versions - used for non-medical situations for general protection from third party contamination.

FEATURES

- Single use - disposable PP +PE
- Full range of height sizes:
 - XS- 120
 - S - 125
 - M- 130
 - L- 135
 - XL- 140
 - 2XL- 145
- Gown color: blue
- Shipping from Ning Boi



STANDARDS

PPE Regulation (EU) 2016/425

Impact Penetration Test

As per ANSI/AAMI PB70:2012 and modified AATCC TM42-2017e.

| | Area (A) Chest | Area (B) Sleeve Seam | Area (C) Tie |
|--------------|-------------------|-------------------------|-----------------|
| Specimen (1) | Negligible | >5.0 g | 3.9 g |
| Specimen (2) | Negligible | 0.1 g | 0.5 g |
| Specimen (3) | Negligible | 2.7 g | >5.0 g |
| Average | Negligible | 2.6 g | 3.1 g |

| Level | Test | Result |
|-------|---|------------------|
| 1 | AATCC 42 | ≤4.5 g |
| 2 | AATCC 42 AATCC 127 | ≤1.0 g ≥20 cm |
| 3 | AATCC 42 AATCC 127 | ≤1.0 g ≥50 cm |
| 4 | ASTM F1671 (surgical gowns, isolation gowns and other protective apparel) ASTM F1670 (surgical drapes and drape accessories) | Pass Pass |

Notes:

1. Tested on the face side
2. Classification of barrier performance of surgical gowns, isolation gowns, other protective apparel, surgical drapes and drape accessories listed for reference only.

PACKING SPECIFICATIONS & QUANTITIES

| DESCRIPTION | CARTON SIZE | UNITS/ CARTON | CARTON WEIGHT | PALLET DIMENSIONS | UNITS PER 20 GP CONTAINER | UNITS PER 40 GP CONTAINER | UNITS PER 40 HQ CONTAINER | MOQ |
|----------------------------|-----------------|------------------|------------------|----------------------|---------------------------------|---------------------------------|---------------------------------|-----------|
| Non-sterile Isolation Gown | 58 x 36 x 35 cm | 50 | 12 kgs | | 19,150 | 36,950 | 42,500 | 2,000,000 |
| Sterile Isolation Gown | 58 x 36 x 35 cm | 70 | 14 kgs | | 19,150 | 36,950 | 42,500 | 2,000,000 |

Full Protective Gowns

DISPOSABLE FULL PROTECTIVE GOWN

For situations where extra protection is needed. Full coverage and a zip front. Available in sterile & non-sterile

FEATURES

- Single use - disposable
- Non-woven fabric PP+ PE film coating
- Full range of height sizes:
 - XS- 120
 - S - 125
 - M- 130
 - L- 135
 - XL- 140
 - 2XL- 145



STANDARDS

PPE Regulation (EU) 2016/425

Impact Penetration Test

As per ANSI/AAMI PB70:2012 and modified AATCC TM42-2017e.

| | Area (A) Chest | Area (B) Sleeve Seam | Area (C) Tie |
|--------------|-------------------|-------------------------|-----------------|
| Specimen (1) | Negligible | >5.0 g | 3.9 g |
| Specimen (2) | Negligible | 0.1 g | 0.5 g |
| Specimen (3) | Negligible | 2.7 g | >5.0 g |
| Average | Negligible | 2.6 g | 3.1 g |

| Level | Test | Result |
|-------|---|------------------|
| 1 | AATCC 42 | ≤4.5 g |
| 2 | AATCC 42 AATCC 127 | ≤1.0 g ≥20 cm |
| 3 | AATCC 42 AATCC 127 | ≤1.0 g ≥50 cm |
| 4 | ASTM F1671 (surgical gowns, isolation gowns and other protective apparel) ASTM F1670 (surgical drapes and drape accessories) | Pass Pass |

Notes:

1. Tested on the face side
2. Classification of barrier performance of surgical gowns, isolation gowns, other protective apparel, surgical drapes and drape accessories listed for reference only:

PACKING SPECIFICATIONS & QUANTITIES

| DESCRIPTION | CARTON SIZE | UNITS/ CARTON | CARTON WEIGHT | PALLET DIMENSIONS | UNITS PER 20 GP CONTAINER | UNITS PER 40 GP CONTAINER | UNITS PER 40 HQ CONTAINER | MOQ |
|--------------------------------------|-----------------|------------------|------------------|----------------------|---------------------------------|---------------------------------|---------------------------------|-----------|
| Isolation Coverall Gown Non-Sterile | 58 x 36 x 35 cm | 30 | 9 kgs | | 11,490 | 22,170 | 25,470 | 1,000,000 |
| Protective Coverall Gown Non-Sterile | 58 x 36 x 35 cm | 35 | 10 kgs | | 11,490 | 22,170 | 25,470 | 1,000,000 |
| Protective Coverall Gown Sterile | 58 x 36 x 35 cm | 35 | 10 kgs | | 11,490 | 22,170 | 25,470 | 1,000,000 |

Scrubs

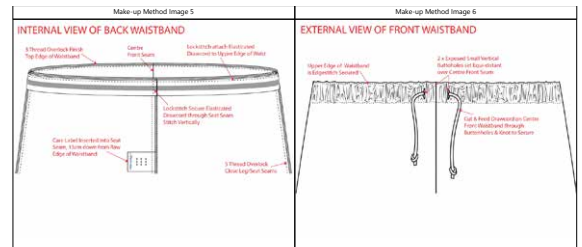
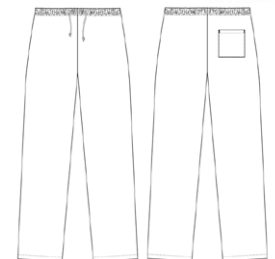
Scrubs - unisex trouser

Full range of sizes

Cotton Polyester hospital scrubs. High quality manufacture with rear pocket & drawstring & elastic waist.

FEATURES

- Waistband with drawcord and elastic
- Drawcord threaded through 2 x small vertical buttonholes on centre-front
- Righthand back patch pocket. Lockstitch hem pocket top 1.5cm in depth. Lockstitch attach & secure with vertical bar-tacks
- 3 thread overlock finish hem edge. Hemmed lengths are lockstitch hemmed 1.5cm in depth
- 5 thread overlock close inside & outside leg seams, centre front & seat seam



Sizing

| | XXS | XS | S | M | L | XL | XXL | 3XL | 4XL | 5XL | 6XL |
|----------------|------|----|----|----|----|----|-----|-----|-----|-----|-----|
| Waist Relaxed | 26 | 28 | 32 | 36 | 40 | 44 | 48 | 52 | 56 | 60 | 64 |
| Waist Extended | 44.5 | 47 | 52 | 57 | 62 | 67 | 72 | 77 | 82 | 87 | 92 |

Scrubs

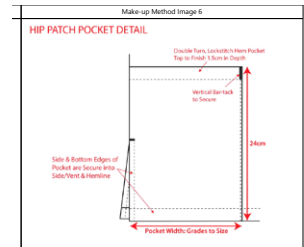
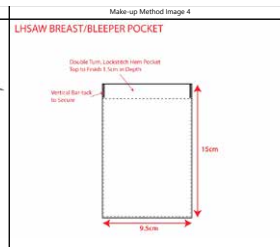
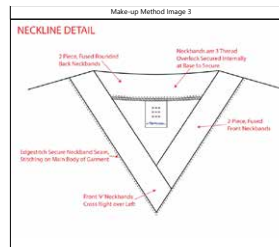
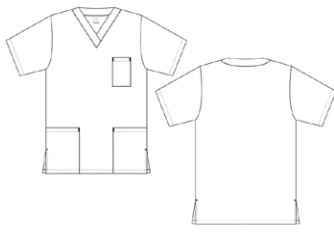
Scrubs - unisex top - short sleeve

Full range of sizes

Cotton Polyester hospital scrubs. High quality manufacture with breast and hip pockets.

FEATURES

- "V" shaped neckline
- Lefthand side breast pocket
- Lower hip patch pockets. Attached into side/vent & hem edge
- One piece front panel
- One piece sleeve
- Plain one piece back panel
- Side Vents



Sizing

| | XXS | XS | S | M | L | XL | XXL | 3XL | 4XL | 5XL | 6XL |
|---------------------|------|----|----|----|----|------|-----|------|-----|------|-----|
| Chest - at Underarm | 45.5 | 48 | 53 | 58 | 63 | 68 | 73 | 78 | 83 | 88 | 93 |
| Neck Circum. | 58 | 58 | 58 | 58 | 58 | 59.5 | 62 | 64.5 | 67 | 69.5 | 72 |